

TB Salers

Friday, March 29, 2024

1 p.m. • Yankton, South Dakota

Selling 40+ Virgin Bulls and 10 Females



Beef is Our Family Business... The Salers Cow is Part of Our Family

TB Salers

The Beesons • Terry & Belinda

Jeff, Lindsay, Rylan, Bowen, & Blair
30747 403rd Ave., Dante, SD 57329

Selling the 40+ Top Cut Salers & Optimizer Herd Bull Prospects

Added Feature: Selling the top 10 females sired by TB's elite herd bull battery

TB Salers

The Beesons • Terry & Belinda
Jeff, Lindsay, Rylan, Bowen, & Blair

Our family would like to welcome everyone to our 37th annual Production Sale on March 29 at 1:00 p.m. at Stockmen's Livestock.

Last year, our sale offering went to 9 states. We continue to be thankful for our loyal friends and customers.

We enjoyed the good weather last fall to round up feed and get projects done for spring calving. The cattle market is coming on strong and will be very good for the next two to three years. Pounds will pay big time and a Salers Angus cross will push the scales. Our percentage Salers will do the job and make you more money.

We have a top set of bulls to offer for this year's sale. Bulls have been semen tested, have received foot rot shots and spring breeding shots. Weights, scrotal and ultrasound will be available on sale day.

We sold two bulls, one in the 2021 sale and one in the 2022 sale to Elm Creek Ranch, Hebron, North Dakota, that have sired bulls that are at Midland Bull Test. They are 2nd and 3rd on Average Daily Gain (ADG) and 1st and 2nd on Weight Per Day of Age (WDA).

The 10 heifers are the top of the best we have. We are really proud of what they offer for the show ring or pasture. They have had a spring breeding shot and are ready to go.

Please join us on sale day.

Thanks!

The Beesons... Terry & Belinda
Jeff, Lindsay, Rylan, Bowen & Blair



TB Salers Sale time
1 p.m.

A special bred cow sale at Stockmen's Livestock will held at 11 a.m., prior to the TB Salers Sale.

The bulls selling are the top cut from the 98 bulls in the 2023 calf crop. None of the cattle selling were creep fed.
Data from that calf crop:

Avg. weights – 2023 TB Salers Bull Calf Crop

Adj. BW	84 lb.
Adj. WW	606 lb. No creep

Avg. EPDs of the 98 TB Salers contemporaries

BW EPD	0.1
WW EPD	61.6
YW EPD	90.0
MM EPD	16.1



J.R. & Debbie Adcock
Sale Manager

Welcome to Terry and Jeff Beeson's 37th annual production sale. I said last year that a year makes a difference, and that is turning out to be true. As I write this letter, we are breaking and reaching new tops in the feeder calf prices. Cowherds across the country are at new lows, the lowest since 1948.

Now is an excellent time to be proactive in making sound breeding selections and decisions in one's breeding program. Dr. Larry Cundiff, who retired from the Meat Animal Research Center in Clay Center, NE, said, "cross breeding is one of the most effective low input, high output management practices that cattlemen can adopt. A commercial cattleman's goal should be to maximize Heterosis in his herd."

A farmer makes decisions on what seeds to plant well in advance of the spring season. The seeds they plant are hybrids that have crossed for generations. It should be no different in the cattle industry. When you consider the genetics you want to use, you can depend on TB Salers. They take the guess work out of your bull and heifer replacements, using the data and experience they have collected over the years. They have built their cow herd with Longevity stamped in, with built-in Heterosis and emphasis on red meat to top the market.

Please join us at Stockmen's Livestock in Yankton, South Dakota, at 1 p.m. on March 29, 2024. If you can't make it, give Terry, Jeff, Dean Pike, or me a call. We will be glad to assist you. The sale will also be on DV Auction. Be sure and sign in ahead of sale time.

See you sale day!

Sincerely,
J.R. Adcock

Friday, March 29, 2024 • 1 p.m. • Yankton, SD

Beef is Our Family Business... The Salers Cow is Part of Our Family



SALE LOCATION

Stockmen's Livestock Market
E Hwy 50, Yankton, SD
Phone (605) 665-9641

TB Salers

The Beesons • Terry & Belinda

Jeff, Lindsay, Rylan, Bowen, & Blair
30747 403rd Ave., Dante, SD 57329
(605) 286-3955 (home & fax)
(605) 481-0646 (Terry's cell)
(605) 491-0554 (Jeff's cell)
e-mail: tbbeeson@goldenwest.net



Sale Management:

J.R. & Debbie Adcock

cell (785) 547-6781
1793 US 73, Hiawatha, KS 66434
bittersweetwest@rainbowtel.net

SALE DAY PHONES

(605) 481-0646 Terry Beeson
(605) 491-0554 Jeff Beeson
(785) 547-6781 J.R. Adcock
(303) 810-7605 Dean Pike
(605) 661-1451 Greg Ryken, Stockmen's Livestock Market
(605) 665-9641 Stockmen's Livestock Market

SALE SCHEDULE

Friday, March 29, 2024 – Start Time of 1 p.m.

Lunch will be available for purchase in the sale barn café.
Cattle will be available for inspection at the sale site beginning Thursday afternoon. Prior to that, please call to view cattle at the ranch.

SALE STAFF

Justin Stout, Auctioneer(913) 645-5136
Dean Pike, American Salers Assn.(303) 810-7605

ACCOMMODATIONS

Best Western Kelly Inn – 1706 E Hwy 50, Yankton (605) 665-2906
Comfort Inn – 611 W 23rd St., Yankton (605) 689-3400
Days Inn – 2410 Broadway Ave., Yankton (605) 679-6519

VIDEOS... Video links of each bull will be posted on DVauction.com

SUPPLEMENT. Weights of the bulls and ultrasound information will be available sale day on the Supplement.

ONLINE BIDDING. This sale will be broadcast live on the internet on DV Auction. See the DV Auction box below for details on viewing and bidding.

PAYMENT. Cash or Check. Please settle for cattle promptly.

ANNOUNCEMENTS. Announcements made sale day from the auction block during the sale will take precedence over printed material in the catalog or other printed material associated with the sale.

TERMS & CONDITIONS. All cattle sell according to the standard terms and conditions recommended by the American Salers Assn.

INSURANCE. All animals become the property of the purchaser and will be at purchaser's risk at the time of sale. Insurance will be available at checkout.

LIABILITY. Everyone attends the sale at his or her own risk. TB Salers, Bittersweet West, Stockmen's Livestock Market, owners, sale management, sale staff and anyone associated with conducting the sale assume no liability whatsoever as to risk or personal injury. Cattle are the liability of the buyer when the auctioneer says "Sold." Every effort will be made to insure safe handling of the cattle through the sale and loadout.

BREEDING GUARANTEES. Breeding age bulls sell with semen test. Bulls are guaranteed to be breeders the first breeding season. We need to be notified after the first breeding season in writing if there's a problem. The seller shall have six months to prove said animal. At no time shall the seller be liable for more than the purchase price. We will replace with a like animal or give full credit in next year's sale. Females sell as guaranteed breeders. In the event a female is claimed to be a non-breeder, after having been bred regularly to a bull known to be a breeder, the matter must be reported in writing to seller. The seller shall have six months to prove said animal. At no time shall the seller be liable for more than the purchase price. We will replace the animal with a like animal or give full credit in next year's sale. No guarantee is given that heifers will deliver a live calf. If a female is subjected to hormonal or surgical reproduction techniques, this guarantee is null and void.

EPDS. EPDs were current as of Feb. 14, 2024.

PHOTOS. Catalog photos by Adam White.

TRUCKING. We will be glad to assist in making the best possible trucking arrangements.

HEALTH. Interstate health papers will be furnished on all cattle selling.

This sale will be broadcast live on the internet.



To View or bid at TB Salers Production sale:

- Visit www.dvauction.com
- Register to create username & password
- Fill out banking information
- Click apply for bidding and select TB Salers Production Sale

You Must have high-speed Internet access to bid. For questions or assistance, please contact Tech Support at (402) 316-5460.

For a Live Feed of each Lot as they are being sold – Visit www.dvauction.com

Sons of Keys Excel 66G (P734343)



Lot 1 – TSB Lawman 95L

1

TSB LAWMAN 95L

Bull

Calved 2/24/2023 P758965 Tattoo TSB95L
Polled • Black • 3/4 SA 1/4 AN

Adj. BW	KEYS EXCEL 50E		KEYS MONUMENT 234A					
96#	KEYS EXCEL 66G		MISS KEY PATIENCE 30Y					
Wean Wt.	MISS KEY NOREEN 130C		RAO ALBERT					
723#	WARD CHISUM C535		*MISS KEY NOREEN 80Z					
ratio 118	TSB HONEY 72F		MAC ZOAH 213Z					
Dam's Production	*NJF MISS FEIST 421B		*WARD 61U UNIVERSITY Z234					
NR 104			*THATS ZEPPLIN 134Z					
on 4 prog			NJF MISS FEIST 959W					
	BW	WW	YW	MM	MWW	CED	CEM	
	EPD	2.4	74	114	17	54	10.1	3.9
	MARB	CWT	REA	FAT	DOC	STAY		
	EPD	-0.1	23.6	0.92	-0.07	9	12	

- TOP 2% for REA
- TOP 5% for YW
- TOP 7% for WW
- TOP 2% for CWT
- There are 3 Gold Dams in the first 3 generations of 95L's pedigree.
- TSB Lawman 95L pushes the scale and so will his calves. His heterosis punch will add pounds to the calf crop.

2

TSB LEROY 175L

Bull

Calved 3/17/2023 P758920 Tattoo TSB175L
Polled • Black • 3/4 SA 1/4 AN

Adj. BW	KEYS EXCEL 50E		KEYS MONUMENT 234A					
86#	KEYS EXCEL 66G		MISS KEY PATIENCE 30Y					
Wean Wt.	MISS KEY NOREEN 130C		RAO ALBERT					
638#	SKF BLK PLD SUIT 'N TIE		*MISS KEY NOREEN 80Z					
ratio 104	*TSB SUGAR 1D		SKF PAPAARAZZI					
Dam's Production	STP AVA		SKF RED QUPIE 7U					
NR 106			*OPP CUSTOM MADE OF 50K					
on 5 prog			STP ANGIE 2X					
	BW	WW	YW	MM	MWW	CED	CEM	
	EPD	0.8	59	93	16	46	12.1	5.9
	MARB	CWT	REA	FAT	DOC	STAY		
	EPD	0.0	13.8	0.86	-0.08	9	11	

- 175L's dam is a Gold Dam.
- His dam produced a herd bull, Laser 41F purchased by Panther Country.
- She produced another Herd Bull for Doug Koupal, South Dakota.
- 175L's sire, Keys Excel 66G, is in the TOP 5% for yearling weight and TOP 1% for Ribeye Area in the EPD Percentile ranking.

Sons of Keys Excel 66G (P734343)



Lot 3 – TSB Laramie 60L

3 TSB LARAMIE 60L

Bull

Calved 2/17/2023 P758955 Tattoo TSB60L
 Polled • Black • 5/8 SA 3/8 AN

Adj. BW	KEYS EXCEL 50E		KEYS MONUMENT 234A				
78#	KEYS EXCEL 66G		MISS KEY PATIENCE 30Y				
Wean Wt.	MISS KEY NOREEN 130C		RAO ALBERT				
681#	KEYS LONGSHOT 1Z		*MISS KEY NOREEN 80Z				
ratio 111	TSB STELLA 153F		KEYS LONGSHOT 1X				
Dam's Production	JS 802U		MISS KEY PATIENCE 2X				
NR 103			JFW PACKER 40F				
on 4 prog			MEYER MS RENEGADE BEAUTY				
	BW	WW	YW	MM	MWW	CED	CEM
	EPD -1.6	63	98	17	48	14.1	6.6
	MARB	CWT	REA	FAT	DOC	STAY	
	EPD 0.0	15.6	0.95	-0.07	10	13	

- TOP 1% for REA
- TOP 25% for BW
- TOP 25% for YW
- TOP 30% for WW
- TOP 30% for CED
- TSB 60L has the numbers and phenotype of a true Herd Bull prospect. The maternal grand dam goes back to John Shover's program in Illinois.
- TSB 60L's Weaning Weight Ratio is 111.

4 TSB LUX 174L

Bull

Calved 3/16/2023 P758928 Tattoo TSB174L
 Polled • Black • 3/4 SA 1/4 AN

Adj. BW	KEYS EXCEL 50E		KEYS MONUMENT 234A				
88#	KEYS EXCEL 66G		MISS KEY PATIENCE 30Y				
Wean Wt.	MISS KEY NOREEN 130C		RAO ALBERT				
663#	THATS ZACK 173		*MISS KEY NOREEN 80Z				
ratio 108	TSB EMILIA 86D		PCSL XPRESS				
Dam's Production	BEAR MS SHELBY 457W		CRAW BLK PLD FAITH 16				
NR 104			JGK SIGNAL 657R				
on 4 prog			FFS SUSA 457S				
	BW	WW	YW	MM	MWW	CED	CEM
	EPD 1.4	65	98	15	47	11.8	6.6
	MARB	CWT	REA	FAT	DOC	STAY	
	EPD -0.1	18.1	0.86	-0.07	9	15	

- TOP 25% for WW
- TOP 25% for YW
- TOP 5% for REA
- TOP 3% for Carcass wt.
- His dam is a 9 year old outcross with a perfect udder.
- Paternal grand dam is a Gold Dam

Salers Breed Avg. EPDs for Non-Parents

	BW	WW	YW	MM	MWW	CED	CEM
EPD	-0.4	58	85	19	48	12.6	6.3
	MARB	CWT	REA	FAT	DOC	STAY	
EPD	0.1	11.1	0.61	-0.06	11	15	

Sons of Keys Excel 66G (P734343)



Lot 5 – TSB Lorenzo 65L

5 TSB LORENZO 65L

Calved 2/20/2023 P758905 Tattoo TSB65L
Polled • Black • 5/8 SA 3/8 AN

Adj. BW	KEYS EXCEL 50E		KEYS MONUMENT 234A				
74#	KEYS EXCEL 66G		MISS KEY PATIENCE 30Y				
Wean Wt.	MISS KEY NOREEN 130C		RAO ALBERT				
564# ratio 92	MAC YELLOWVILLE 21Y		*MISS KEY NOREEN 80Z				
Dam's Production	TSB HOLLY 73B		MAC F1 SUNDANCE 4S				
NR 97 on 7 prog	TSB RIHANNA 107Y		MAC F1 MARILEE 4M				
			PCSL CZAR 47S				
			TSB PLD KARI 106S				
	BW	WW	YW	MM	MWW	CED	CEM
EPD	-1.4	52	81	16	42	13.5	5.4
	MARB	CWT	REA	FAT	DOC	STAY	
EPD	0.0	9.8	0.71	-0.07	10	15	

- TOP 30% for REA
- TOP 30% for BW
- 65L's sire is TOP 5% of the breed for yearling weight and TOP 1% for ribeye area.
- 65L's dam is TOP 10% for stayability.

6 TSB LOU 156L

Calved 3/8/2023 P758961 Tattoo TSB156L
Polled • Black • 3/4 SA 1/4 AN

Adj. BW	KEYS EXCEL 50E		KEYS MONUMENT 234A				
92#	KEYS EXCEL 66G		MISS KEY PATIENCE 30Y				
Wean Wt.	MISS KEY NOREEN 130C		RAO ALBERT				
575# ratio 94	ECC 586C		*MISS KEY NOREEN 80Z				
Dam's Production	TSB CRYSTALL 23F		ECR ACHILLES 3008A				
NR 87 on 4 prog	TSB EDITH 127D		ECR LADY NELSON 100Y				
			THATS ZACK 173				
			TSB MARTHA 16X				
	BW	WW	YW	MM	MWW	CED	CEM
EPD	1.3	55	85	11	38	10.2	5.0
	MARB	CWT	REA	FAT	DOC	STAY	
EPD	-0.1	7.7	0.74	-0.07	11	15	

- TOP 25% for REA
- 1 Gold Dam in pedigree
- End for end, TSB Lou 156L stamps the beef business brand. He is full of red meat.

7 TSB LUCKY 154L

Calved 3/8/2023 P758964 Tattoo TSB154L
Polled • Black • 5/8 SA 3/8 AN

Adj. BW	KEYS EXCEL 50E		KEYS MONUMENT 234A				
93#	KEYS EXCEL 66G		MISS KEY PATIENCE 30Y				
Wean Wt.	MISS KEY NOREEN 130C		RAO ALBERT				
709# ratio 116	MAC F1 BARRY 36B		*MISS KEY NOREEN 80Z				
Dam's Production	TSB VALORIA 64F		COLEMAN REGIS 904				
NR 104 on 4 prog	*TSB VISTA 26B		MAC ZSA ZSA 9Z				
			*MAC BLACK VISTA 349Y				
			INI JAIME LES 5JY				
	BW	WW	YW	MM	MWW	CED	CEM
EPD	0.9	67	102	19	52	12.9	6.4
	MARB	CWT	REA	FAT	DOC	STAY	
EPD	0.0	15.3	0.72	-0.05	8	15	

- TOP 20% for WW
- TOP 20% for YW
- TOP 30% for REA
- 1 Gold Dam in pedigree and 1 Gold Sire
- TSB 154L has a weaning weight of 709#, which is why he is in the TOP 20% of the breed average.



Lot 8 – TSB Loyal 140L

8 TSB LOYAL 140L

Calved 3/5/2023 P758927 Tattoo TSB140L
Polled • Red • 5/8 SA 3/8 AN

Adj. BW	KEYS EXCEL 50E		KEYS MONUMENT 234A				
87#	KEYS EXCEL 66G		MISS KEY PATIENCE 30Y				
Wean Wt.	MISS KEY NOREEN 130C		RAO ALBERT				
682# ratio 111	TSB BADGER 122B		*MISS KEY NOREEN 80Z				
Dam's Production	*TSB BAD GIRL 78D		MAC WHEATLAND 290W				
NR 107 on 6 prog	TSB CASSY 112Z		*MISS KEY SADIE 120P				
			TSB UTAH 510W				
			TSB PLD KARI 106S				
	BW	WW	YW	MM	MWW	CED	CEM
EPD	0.3	65	102	19	51	12.5	5.8
	MARB	CWT	REA	FAT	DOC	STAY	
EPD	-0.1	22.7	0.89	-0.06	10	13	

- TOP 2% for REA
- TOP 20% for CWT
- TOP 20% for YW
- TOP 25% for WW
- TSB 140L'S dam, TSB Bad Girl 78D, is a Gold Dam.

Sons of Keys Excel 66G (P734343)

9 TSB LENNOX 167L

Bull

Calved 3/12/2023 P758902 Tattoo TSB167L
Polled • Black • 3/4 SA 1/4 AN

Adj. BW	KEYS EXCEL 50E		KEYS MONUMENT 234A					
88#	KEYS EXCEL 66G		MISS KEY PATIENCE 30Y					
Wean Wt.	MISS KEY NOREEN 130C		RAO ALBERT					
690# ratio 113	*THATS ZEPPLIN 134Z		*MISS KEY NOREEN 80Z					
Dam's Production	*NJF MISS FEIST 419B		JCGC WIDE LOAD 1948W					
NR 106 on 7 prog	NJF MISS TOPEKA 265Z		JCGC UTTERLY GORGEOUS					
			*MAC TOPEKA 159T					
			NJF MISS FEIST 060X					
	BW	WW	YW	MM	MWW	CED	CEM	
	EPD	1.7	64	97	15	48	11.0	4.8
		MARB	CWT	REA	FAT	DOC	STAY	
	EPD	-0.2	12.7	0.90	-0.10	9	13	

- TOP 25% for WW
- TOP 25% for YW
- TOP 5% for REA
- 167L's dam is a Gold Dam.
- TSB Lennox 167L has a weaning ratio of 113 in his contemporary group.



Keys Excel 66G – Sire of Lots 1-9, 43, 44 & 51



Go to www.dvauction.com to view the individual videos of the herd bull and heifer prospects

Sons of JSR Chemistry 9105 (P733038)

10 TSB LEO 192L

Bull

Calved 3/28/2023 P758898 Tattoo TSB192L
Polled • Black • 3/4 SA 1/4 AN

Adj. BW	ECR ELECTRON 712E OF 48T		TSB HUNTER 10C					
85#	JSR CHEMISTRY 9105		*OPP BLACK LADY 48T					
Wean Wt.	JSR MS ROCKY 3248A		JCG ROCK 021X					
700# ratio 114	MAC YELLOWVILLE 21Y		JSR MS PAYDAY 7239					
Dam's Production	TSB MORGAN 143B		MAC F1 SUNDANCE 4S					
NR 103 on 8 prog	*TSB TAYLOR 76Y		MAC F1 MARILEE 4M					
			PRK TRANSFORMER 248T					
			TSB PLD KISHA 76S					
	BW	WW	YW	MM	MWW	CED	CEM	
	EPD	0.7	65	99	15	47	8.8	4.4
		MARB	CWT	REA	FAT	DOC	STAY	
	EPD	0.0	17.0	0.61	-0.07	13	14	

- TOP 15% for DOC
- TOP 25% for YW
- TOP 25% for WW
- TOP 30% for CWT
- TSB LEO 192L is from a proven cow family that always produces big performance Herd Bull Prospects.

11 TSB ROCK 194L

Bull

Calved 3/18/2023 P758969 Tattoo TSB194L
Polled • Black • 7/8 SA 1/8 AN

Adj. BW	ECR ELECTRON 712E OF 48T		TSB HUNTER 10C					
88#	JSR CHEMISTRY 9105		*OPP BLACK LADY 48T					
Wean Wt.	JSR MS ROCKY 3248A		JCG ROCK 021X					
677# ratio 111	KKCC REVELATION 401B		JSR MS PAYDAY 7239					
Dam's Production	TSB EMMA 97F		KKCC RESOLUTION 901W					
NR 101 on 4 prog	TSB LOLA 162Z		KKCC BP PREDESTINED 705T					
			SRS WILDCAT 0560W					
			TSB RED LADY 10U					
	BW	WW	YW	MM	MWW	CED	CEM	
	EPD	1.2	64	96	14	46	9.3	3.8
		MARB	CWT	REA	FAT	DOC	STAY	
	EPD	0.0	15.5	0.70	-0.08	12	14	

- TOP 30% for WW
- TOP 30% for YW
- TOP 30% for REA
- TOP 30% for CWT
- 194L's sire, JSR Chemistry 9105, is in the TOP 2% for WW and the TOP 2% for YW
- ROCK 194L is a long spined Herd Bull prospect who should be an easy calving bull.

Sons of JSR Chemistry 9105 (P733038)



Lot 12 – TSB TSB Lucas 125L

14 TSB MACHO 168L

Calved 3/13/2023 P758954 Tattoo TSB168L
Polled • Black • 7/8 SA 1/8 AN

Adj. BW

96#

Wean Wt.

754#
ratio 123

Dam's
Production

NR 110
on 2 prog

ECR ELECTRON 712E OF 48T JSR CHEMISTRY 9105 JSR MS ROCKY 3248A	TSB HUNTER 10C *OPP BLACK LADY 48T JCG ROCK 021X JSR MS PAYDAY 7239 MAC ZOAH 213Z *WARD 61U UNIVERSITY Z234 *THATS ZEPLIN 134Z MEYER MS CRAWFORD
---	---

	BW	WW	YW	MM	MWW	CED	CEM
EPD	3.4	73	111	16	53	7.2	3.2
	MARB	CWT	REA	FAT	DOC	STAY	
EPD	-0.1	18.7	0.72	-0.08	11	12	

- TOP 10% for WW
- TOP 10% for YW
- 2 Gold Dams in pedigree
- 168L will push the scales on sale day and so will his calves.

12 TSB LUCAS 125L

Calved 3/2/2023 P758900 Tattoo TSB125L
Polled • Black • 3/4 SA 1/4 AN

Adj. BW

87#

Wean Wt.

696#
ratio 114

Dam's
Production

NR 103
on 8 prog

ECR ELECTRON 712E OF 48T JSR CHEMISTRY 9105 JSR MS ROCKY 3248A	TSB HUNTER 10C *OPP BLACK LADY 48T JCG ROCK 021X JSR MS PAYDAY 7239 *MAC TORRINGTON 139T MAC PANORAMA 302P *S A V FINAL ANSWER 0035 INI FREEDOM 68U
---	--

	BW	WW	YW	MM	MWW	CED	CEM
EPD	0.9	72	111	17	53	11.0	6.0
	MARB	CWT	REA	FAT	DOC	STAY	
EPD	0.1	16.6	0.52	-0.06	13	14	

- TOP 10% for WW
- TOP 10% for YW
- TOP 25% for DOC
- TSB Lucas 125L's dam, TSB Bristol 3B, has produced 5 Herd Bulls in past sales. TSB Lucas 125L fits that box. He has a big scrotal, and is deep ribbed, with numbers to match.

13 TSB LOUIS 110L

Calved 2/27/2023 P758914 Tattoo TSB110L
Polled • Black • 7/8 SA 1/8 AN

Adj. BW

82#

Wean Wt.

642#
ratio 100

Dam's
Production

NR 106
on 7 prog

ECR ELECTRON 712E OF 48T JSR CHEMISTRY 9105 JSR MS ROCKY 3248A	TSB HUNTER 10C *OPP BLACK LADY 48T JCG ROCK 021X JSR MS PAYDAY 7239 *S NEBRASKA 330N MJB PUMA 104P SRS WILDCAT 0560W TSB CITRINE 121U
---	--

	BW	WW	YW	MM	MWW	CED	CEM
EPD	2.8	64	98	18	50	7.2	3.7
	MARB	CWT	REA	FAT	DOC	STAY	
EPD	0.0	12.5	0.62	-0.08	11	15	

- TOP 25% for YW
- The dam of TSB Louis 110L is a Gold Dam. She has a nursing ratio of 106 on 7 progeny.
- She is also the maternal grand dam of TSB Grady 19G at McDonald Ranches.

15 TSB LIONEL 126L

Calved 3/2/2023 P758919 Tattoo TSB126L
Polled • Black • 3/4 SA 1/4 AN

Adj. BW

82#

Wean Wt.

670#
ratio 110

Dam's
Production

NR 102
on 6 prog

ECR ELECTRON 712E OF 48T JSR CHEMISTRY 9105 JSR MS ROCKY 3248A	TSB HUNTER 10C *OPP BLACK LADY 48T JCG ROCK 021X JSR MS PAYDAY 7239 COLEMAN REGIS 904 MAC ZSA ZSA 9Z MAC YELLOWVILLE 21Y *TSB KASEY 42X
---	--

	BW	WW	YW	MM	MWW	CED	CEM
EPD	-0.8	62	92	17	48	11.8	6.3
	MARB	CWT	REA	FAT	DOC	STAY	
EPD	0.0	11.9	0.54	-0.07	13	15	

- TOP 35% for PERFORMANCE
- In last year's sale, 126L's dam produced a Top Ten Heifer that sold to Edwards Farms in Iowa.

16 TSB CHEM 141L

Calved 3/5/2023 P761095 Tattoo TSB141L
Polled • Black • 7/8 SA 1/8 AN

Adj. BW

Wean Wt.

711#
ratio 116

Dam's
Production

NR 102
on 4 prog

ECR ELECTRON 712E OF 48T JSR CHEMISTRY 9105 JSR MS ROCKY 3248A	TSB HUNTER 10C *OPP BLACK LADY 48T JCG ROCK 021X JSR MS PAYDAY 7239 RCM P BLK WEST STAR 129Y BEAR MS W120 MAC WHEATLAND 290W TSB PLD SOPHIE 163R
---	---

	BW	WW	YW	MM	MWW	CED	CEM
EPD	1.2	66	102	14	47	9.8	5.5
	MARB	CWT	REA	FAT	DOC	STAY	
EPD	-0.1	18.8	0.70	-0.08	11	13	

- TOP 25% for WW
- TOP 20% for YW
- TOP 25% for CWT



Lot 17 – TSB Lawton 143L

“Using Salers and Salers Optimizer bulls on your British cow herd is the road to profitability for both the cowman and the feeder.”

Dan Deichman
Livestock Brokerage
Hobson, Montana

17 TSB LAWTON 143L

Bull

Calved 3/6/2023 P758971 Tattoo TSB143L
Polled • Black • Purebred

Adj. BW	WWB FRANKLIN 4F		RF DIESEL 615C					
102#	NJF JAGGER 5J		TSB STACY 4Z					
Wean Wt.	NJF MISS FEIST 502C		KEYS ROCKSTAR 95X					
770# ratio 126	TSB ECHO 62E		NJF MISS FEIST 959W					
Dam's Production	TSB REBECCA 120G		KEYS LONGSHOT 1Z					
NR 113 on 3 prog	TSB KELLI 4D		TSB MISS RENO 7X					
			KKCC REVELATION 401B					
			TSB ALLIE 77B/					
	BW	WW	YW	MM	MWW	CED	CEM	
	EPD	3.0	74	101	19	56	7.8	2.4
	MARB	CWT	REA	FAT	DOC	STAY		
	EPD	-0.2	15.3	0.88	-0.09	12	13	

- TSB Lawton 143L's Dam has a nursing ratio of 113 on 3 progeny.
- His paternal grand sire was the National Champion in Denver.
- Lawton 143L will move the Percentile Bar in the right direction. This is a herd bull for the mature cows.



Lot 19 – TSB Lincoln 73L

18 TSB LANDON 145L

Bull

Calved 3/6/2023 P758892 Tattoo TSB145L
Polled • Black • 3/4 SA 1/4 AN

Adj. BW	WWB FRANKLIN 4F		RF DIESEL 615C					
88#	NJF JAGGER 5J		TSB STACY 4Z					
Wean Wt.	NJF MISS FEIST 502C		KEYS ROCKSTAR 95X					
647# ratio 106	MAC YELLOWVILLE 21Y		NJF MISS FEIST 959W					
Dam's Production	TSB SKLER 68A		MAC F1 SUNDANCE 4S					
NR 103 on 9 prog	TSB MISS RENO 504X		MAC F1 MARILEE 4M					
			TSB PLD RENO 148S					
			TSB SHANIA					
	BW	WW	YW	MM	MWW	CED	CEM	
	EPD	1.1	55	70	18	45	10.6	6.1
	MARB	CWT	REA	FAT	DOC	STAY		
	EPD	-0.1	5.4	0.63	-0.09	16	15	

- Longevity is a trait the Salers breed is known for. Landon 145L's dam is 10 years old with a nursing ratio of 103 on 9 calves.

19 TSB LINCOLN 73L

Bull

Calved 2/21/2023 P758888 Tattoo TSB73L
Polled • Black • 7/8 SA 1/8 AN

Adj. BW	WWB FRANKLIN 4F		RF DIESEL 615C					
88#	NJF JAGGER 5J		TSB STACY 4Z					
Wean Wt.	NJF MISS FEIST 502C		KEYS ROCKSTAR 95X					
636# ratio 104	SRS WILDCAT 0560W		NJF MISS FEIST 959W					
Dam's Production	TSB RENEE 72Z		SRS RECRUIT 0122R					
NR 101 on 10 prog	TSB CITRINE 121U		SRS RECIPE 0560R					
			DWB PRIMETIME 03P					
			TSB PLD AMANDA 50K					
	BW	WW	YW	MM	MWW	CED	CEM	
	EPD	0.2	53	71	20	46	11.1	6.1
	MARB	CWT	REA	FAT	DOC	STAY		
	EPD	-0.1	8.6	0.75	-0.09	11	17	

- TSB Lincoln 73L's dam has a nursing ratio of 101 on 10 calves. I keep talking about longevity built into the Salers breed. Here's a good example. His dam raised 10 calves and stayed above the herd average.

Sons of NJF Jagger 5J (P749121)



Lot 20 – TSB Levi 133L

20 TSB LEVI 133L

Bull

Calved 3/4/2023 P758886 Tattoo TSB133L
Polled • Black • Purebred

Adj. BW	WWB FRANKLIN 4F		RF DIESEL 615C				
75#	NJF JAGGER 5J		TSB STACY 4Z				
Wean Wt.	NJF MISS FEIST 502C		KEYS ROCKSTAR 95X				
594# ratio 97	TSB UTAH 510W		NJF MISS FEIST 959W				
Dam's Production	TSB CASSY 112Z		TSB USA 304T				
NR 98 on 10 prog	TSB PLD KARI 106S		TSB PLD STARR 149S				
			MAC NIAGARA 61N				
			TSB CANDY 178P				
	BW	WW	YW	MM	MWW	CEM	CEM
EPD	-0.9	54	69	18	45	12.2	5.2
	MARB	CWT	REA	FAT	DOC	STAY	
EPD	-0.3	4.8	0.77	-0.10	13	14	

- TOP 15% for REA
- TOP 25% for DOC
- TSB Cassy 112Z, the dam of Levi 133L, is also the dam of TSB Bad Girl 78D. TSB Bad Girl 78D is the Dam of Lot 8.
- TSB Cassy 112Z is also the dam of one of our Herd Sires. This emphasizes the importance of the cow family at TB Salers.

21 TSB LEGEND 90L

Bull

Calved 2/23/2023 P758890 Tattoo TSB90L
Polled • Black • 3/4 SA 1/4 AN

Adj. BW	WWB FRANKLIN 4F		RF DIESEL 615C				
88#	NJF JAGGER 5J		TSB STACY 4Z				
Wean Wt.	NJF MISS FEIST 502C		KEYS ROCKSTAR 95X				
670# ratio 110	SRS WILDCAT 0560W		NJF MISS FEIST 959W				
Dam's Production	TSB JONNA 171A		SRS RECRUIT 0122R				
NR 102 on 9 prog	*MISS KEY DESIGN 121P		SRS RECIPE 0560R				
			*J W K NEW DESIGN 0028				
			MISS KEY PRISM 144C				
	BW	WW	YW	MM	MWW	CEM	CEM
EPD	1.9	66	96	16	49	9.9	6.4
	MARB	CWT	REA	FAT	DOC	STAY	
EPD	-0.1	25.4	0.75	-0.07	12	16	

- TOP 25% for WW
- TOP 30% for YW
- TOP 20% for REA
- TOP 15% for CWT
- TSB Jonna 171A, the dam of TSB Legend 90L, is the maternal grand dam of Lot 45 and also the maternal grand dam of TSB Bubba 38K who sold in last year's sale to Parke Ranch, Drummond, MT for \$10,000.

22 TSB LUKE 44L

Bull

Calved 2/12/2023 P758895 Tattoo TSB44L
Polled • Black • 7/8 SA 1/8 AN

Adj. BW	WWB FRANKLIN 4F		RF DIESEL 615C				
79#	NJF JAGGER 5J		TSB STACY 4Z				
Wean Wt.	NJF MISS FEIST 502C		KEYS ROCKSTAR 95X				
519# ratio 85	OPP INTREPID OF 50K		NJF MISS FEIST 959W				
Dam's Production	WWCS INTREPID 983A		*GGT P BK ENFORCER 300U				
NR 93 on 9 prog	WWCS DASHING		*S BLACK LADY 50K				
			CALIFORNIA TRAVELER				
			WWCS BENDASH				
	BW	WW	YW	MM	MWW	CEM	CEM
EPD	0.3	52	70	12	38	11.9	7.7
	MARB	CWT	REA	FAT	DOC	STAY	
EPD	-0.1	3.9	0.66	-0.09	19	15	

- With a 0.3 BW EPD, TSB LUKE 44L should be a night calving ease specialist.

Sons of ECR Eastwood 713E (P715938)

23 TSB LEIGHTON 121L

Bull

Calved 3/2/2023 P758913 Tattoo TSB121L
Polled • Black • 3/4 SA 1/4 AN

Adj. BW	BIG SKY REVELATION 40B		*SRS OUTBACK 0809X				
85#	ECR EASTWOOD 713E		BIG SKY MISS ROWDY 68T				
Wean Wt.	*OPP BLACK LADY 1X OF 77U		OPP UNIVERSAL 809U				
641# ratio 105	KEYS LONGSHOT 1Z		S BLACK LADY 77U				
Dam's Production	*TSB LULA 6C		KEYS LONGSHOT 1X				
NR 109 on 7 prog	TSB VERA 85A		MISS KEY PATIENCE 2X				
			ASH BUG 7U				
			*TSB PLD JESSA 14R				
	BW	WW	YW	MM	MWW	CEM	CEM
EPD	-0.2	59	86	17	47	12.3	6.1
	MARB	CWT	REA	FAT	DOC	STAY	
EPD	0.1	9.0	0.64	-0.05	13	16	

- 121L's dam, TSB Lula 6C is a Gold Dam with a nursing ratio of 109 on 7 calves.
- ECR Eastwood 713E, sire of TSB Leighton 121L has an 18.5 CED with accuracy of .58%

24 TSB LOYAL 92L

Bull

Calved 2/24/2023 P758916 Tattoo TSB92L
Polled • Black • 3/4 SA 1/4 AN

Adj. BW	BIG SKY REVELATION 40B		*SRS OUTBACK 0809X				
76#	ECR EASTWOOD 713E		BIG SKY MISS ROWDY 68T				
Wean Wt.	*OPP BLACK LADY 1X OF 77U		OPP UNIVERSAL 809U				
588# ratio 96	OPP VALOR 351A		S BLACK LADY 77U				
Dam's Production	WHR MS VALOR 113C		*MAC BLACK VISTA 349Y				
NR 100 on 7 prog	D 20 SIERRA 46P		OPP BLACK LADY 53S				
			D IMPACT M20				
			D 9032 MISS SIERRA 271M				
	BW	WW	YW	MM	MWW	CEM	CEM
EPD	-2.5	43	63	20	41	17.5	10.7
	MARB	CWT	REA	FAT	DOC	STAY	
EPD	0.2	-1.0	0.49	-0.05	12	18	

- 92L has that perfect curve bending EPD spread that makes a great calving ease specialist for 1st calf heifers. 92L's dam has produced 4 herd bulls in previous sales.

25 TSB LAWSON 165L

Bull

Calved 3/11/2023 P758903 Tattoo TSB165L
Polled • Black • 7/8 SA 1/8 AN

Adj. BW	BIG SKY REVELATION 40B		*SRS OUTBACK 0809X					
90#	ECR EASTWOOD 713E		BIG SKY MISS ROWDY 68T					
Wean Wt.	*OPP BLACK LADY 1X OF 77U		OPP UNIVERSAL 809U					
653# ratio 107	BIG SKY EXPLORER 26Y		S BLACK LADY 77U					
Dam's Production	*TSB BIANCA 50B		OPP DUKE 922W OF 4M					
NR 112 on 8 prog	TSB PLD CLOVER 414U		BIG SKY MISS ROWDY 29T					
			*MAC NEUTRON 94N					
			MISS KEY DESIGN 27P					
	BW	WW	YW	MM	MWW	CED	CEM	
	EPD	0.4	59	89	21	51	13.6	9.1
		MARB	CWT	REA	FAT	DOC	STAY	
	EPD	0.0	11.2	0.57	-0.05	15	16	

- 165L checks a lot of boxes. This 7/8 Herd Bull prospect is out of a Gold Dam, TSB Bianca 50B, who has a nursing ratio of 112 on 8 calves. She has a Herd Bull at Panther Country Salers in Nebraska. A maternal sister sold to Rob Bodine of 9th Avenue Cattle Co., North Dakota, in 2023.



Lot 28 – TSB Lionel 84L

26 TSB LINDEN 120L

Bull

Calved 3/1/2023 P758949 Tattoo TSB120L
Polled • Black • 7/8 SA 1/8 AN

Adj. BW	BIG SKY REVELATION 40B		*SRS OUTBACK 0809X					
80#	ECR EASTWOOD 713E		BIG SKY MISS ROWDY 68T					
Wean Wt.	*OPP BLACK LADY 1X OF 77U		OPP UNIVERSAL 809U					
636# ratio 104	KEYS ROCKSTAR 95X		S BLACK LADY 77U					
Dam's Production	BODINES MS E715		NJF TOP LEVEL 41T					
NR 96 on 5 prog	LINDENHILL EMMA 1015X		MISS KEY ESTELLE 10N					
			LINDENHILL TNT 753T					
			WJM MAVIS 79M					
	BW	WW	YW	MM	MWW	CED	CEM	
	EPD	-1.9	56	79	16	44	15.4	9.4
		MARB	CWT	REA	FAT	DOC	STAY	
	EPD	-0.1	4.5	0.59	-0.05	13	17	

- TOP 10% for CEM
- TOP 15% for CED
- TOP 25% for DOC
- TOP 20% for BW
- With a weaning weight ratio of 104 and low birth EPDs, this ECR Eastwood son is a candidate for Herd Bull prospect for heifers.

27 TSB LANCE 86L

Bull

Calved 2/22/2023 P758918 Tattoo TSB86L
Polled • Black • 7/8 SA 1/8 AN

Adj. BW	BIG SKY REVELATION 40B		*SRS OUTBACK 0809X					
92#	ECR EASTWOOD 713E		BIG SKY MISS ROWDY 68T					
Wean Wt.	*OPP BLACK LADY 1X OF 77U		OPP UNIVERSAL 809U					
623# ratio 102	KEYS ROCKSTAR 95X		S BLACK LADY 77U					
Dam's Production	BODINES MS C519		NJF TOP LEVEL 41T					
NR 100 on 7 prog	*BODINES MS 269Z		MISS KEY ESTELLE 10N					
			JFW PACKER 40F					
			RRF ROBINETTA 59M					
	BW	WW	YW	MM	MWW	CED	CEM	
	EPD	0.7	58	81	18	47	12.4	7.4
		MARB	CWT	REA	FAT	DOC	STAY	
	EPD	-0.1	3.7	0.61	-0.06	13	16	

- There are 2 Gold Dams in 86L's pedigree. What does this mean? A Gold Dam has to meet the strict selection criteria of early puberty and conception, a regular calving interval, and above average Weaning Weight on at least 3 calves. This is why you see so many Gold Dams in the TB Salers program.

28 TSB LIONEL 84L

Bull

Calved 2/22/2023 P758939 Tattoo TSB84L
Polled • Black • 5/8 SA 3/8 AN

Adj. BW	BIG SKY REVELATION 40B		*SRS OUTBACK 0809X					
79#	ECR EASTWOOD 713E		BIG SKY MISS ROWDY 68T					
Wean Wt.	*OPP BLACK LADY 1X OF 77U		OPP UNIVERSAL 809U					
601# ratio 98	MAC F1 BARRY 36B		S BLACK LADY 77U					
Dam's Production	TSB MELINA 185E		COLEMAN REGIS 90A					
NR 95 on 5 prog	TSB MORGAN 143B		MAC ZSA ZSA 9Z					
			MAC YELLOWVILLE 21Y					
			*TSB TAYLOR 76Y					
	BW	WW	YW	MM	MWW	CED	CEM	
	EPD	-2.4	48	71	19	43	16.5	9.6
		MARB	CWT	REA	FAT	DOC	STAY	
	EPD	0.1	6.9	0.43	-0.04	13	19	

- TOP 5% for CEM
- TOP 10% for CED
- TOP 15% for BW
- TSB Lionel 84L should work on your replacement heifers. A full brother in last year's sale sold to Paul Tolsma, South Dakota. In the 2022 sale, a heifer sold to Bittersweet Farms Carthage, Missouri.

29 TSB LANDEN 114L

Bull

Calved 2/28/2023 P758917 Tattoo TSB114L
Polled • Black • 7/8 SA 1/8 AN

Adj. BW	BIG SKY REVELATION 40B		*SRS OUTBACK 0809X					
80#	ECR EASTWOOD 713E		BIG SKY MISS ROWDY 68T					
Wean Wt.	*OPP BLACK LADY 1X OF 77U		OPP UNIVERSAL 809U					
589# ratio 96	KEYS ROCKSTAR 95X		S BLACK LADY 77U					
Dam's Production	BODINES MS C518		NJF TOP LEVEL 41T					
NR 101 on 7 prog	MJB TABATHA 144T		MISS KEY ESTELLE 10N					
			*GGT P HEAVY DUTY 100J					
			MISS W MASTERPIECE 66F					
	BW	WW	YW	MM	MWW	CED	CEM	
	EPD	-2.0	51	70	18	43	16.3	10.1
		MARB	CWT	REA	FAT	DOC	STAY	
	EPD	-0.1	0.0	0.62	-0.06	12	18	

- TOP 5% for CEM
- TOP 10% for CED
- TOP 15% for STAYABILITY
- TOP 20% for BW
- 2 Gold Sires in the pedigree as well as 1 Gold Dam. TSB Landen 114L should be another night calving ease bull. TSB Landen 114L's sire has -2.4 on Birth Weight.

Sons of MAC Galaxy 68G (P735157)



Lot 30 – TSB Lenox 87L

30 TSB LENOX 87L

Bull

Calved 2/22/2023 P759001 Tattoo TSB87L
Polled • Black • 3/4 SA 1/4 AN

Adj. BW	*MAC BLACKBEARD 31B		MAC F1 HUMBOLDT 312Z				
84#	MAC GALAXY 68G		MAC ZIP UP 69Z				
Wean Wt.	MAC F1 EVELYN 486E		BARSTOW BANKROLL B73				
706#	PCSL EASTON		MAC ALLYCE 265A				
ratio 116	TSB PENNY 162H		PCSL ZEUS				
Dam's Production	TSB ELVIRA 118E		*PCSL WINE				
NR 111	BW	WW	YW	MM	MWW	CEM	
on 2 prog	EPD	-1.1	52	78	24	50	13.3
	MARB	CWT	REA	FAT	DOC	STAY	
	EPD	0.3	10.4	0.55	-0.06	8	18

This 3/4 son of Mac Galaxy 68G has low Birth Weight and high Calving Ease Direct numbers which will make him a candidate for a sleep easy bull.

31 TSB GALAXY 76L

Bull

Calved 2/21/2023 P759003 Tattoo TSB76L
Polled • Black • 3/4 SA 1/4 AN

Adj. BW	*MAC BLACKBEARD 31B		MAC F1 HUMBOLDT 312Z				
89#	MAC GALAXY 68G		MAC ZIP UP 69Z				
Wean Wt.	MAC F1 EVELYN 486E		BARSTOW BANKROLL B73				
578#	PCSL EASTON		MAC ALLYCE 265A				
ratio 95	TSB AMBER 174H		PCSL ZEUS				
Dam's Production	*BODINES MS E709		*PCSL WINE				
NR 97	BW	WW	YW	MM	MWW	CEM	
on 2 prog	EPD	-0.1	48	70	19	43	11.7
	MARB	CWT	REA	FAT	DOC	STAY	
	EPD	0.3	3.4	0.47	-0.06	9	17

TOP 10% for MARBLING
The Heterosis factor of using Salers and Salers Optimizer bulls gives you that free lunch, so to speak. It means extra pounds on your commercial cows. Take a look at this prospect.

32 TSB LIBERTY 157L

Bull

Calved 3/9/2023 P759005 Tattoo TSB157L
Polled • Black • 3/4 SA 1/4 AN

Adj. BW	*MAC BLACKBEARD 31B		MAC F1 HUMBOLDT 312Z				
85#	MAC GALAXY 68G		MAC ZIP UP 69Z				
Wean Wt.	MAC F1 EVELYN 486E		BARSTOW BANKROLL B73				
594#	BIG SKY EDGE 26E		MAC ALLYCE 265A				
ratio 97	TSB MABEL 18H		BIG SKY SOLUTION 31Z				
Dam's Production	BODINE'S MS 836F		*BIG SKY MISS OUTBACK 7C				
NR 99	BW	WW	YW	MM	MWW	CEM	
on 2 prog	EPD	-1.3	47	73	21	44	13.5
	MARB	CWT	REA	FAT	DOC	STAY	
	EPD	0.2	5.8	0.59	-0.07	9	16

TOP 30% for BW
TOP 25% for MARBLING
TOP 25% for CEM
TB Salers program is stacked with genetics with top of line performance, fertility, and don't forget the maternal power. Last year, Josh Hoffman from North Dakota purchased a bull out of the maternal grand dam, Bodine's Ms 836F.

Salers Breed Avg. EPDs for Non-Parents

	BW	WW	YW	MM	MWW	CEM	
EPD	-0.4	58	85	19	48	12.6	6.3
	MARB	CWT	REA	FAT	DOC	STAY	
EPD	0.1	11.1	0.61	-0.06	11	15	

Sons of MAC Galaxy 68G (P735157)

33 TSB LOTTO 45L

Bull

Calved 2/12/2023 P758993 Tattoo TSB45L
Polled • Black • 3/4 SA 1/4 AN

Adj. BW	*MAC BLACKBEARD 31B		MAC F1 HUMBOLDT 312Z					
80#	MAC GALAXY 68G		MAC ZIP UP 69Z					
Wean Wt.	MAC F1 EVELYN 486E		BARSTOW BANKROLL B73					
604# ratio 99	KEYS CRUISER 105C		MAC ALLYCE 265A					
Dam's Production	TSB RODA 123H		KEYS MONUMENT 234A					
NR 95 on 2 prog	*MAC CARINA 362C		MISS KEY CLAIRE 169Y					
			*S NEBRASKA 330N					
			*MAC VALLIE 357X					
	BW	WW	YW	MM	MWW	CED	CEM	
	EPD	-1.7	49	71	19	43	13.7	7.6
	MARB	CWT	REA	FAT	DOC	STAY		
	EPD	0.3	7.3	0.49	-0.06	10	18	

- TOP 10% for MARBLING
- TOP 15% for STAYABILITY
- TOP 20% for BW
- TOP 30% for CEM
- There are 2 Gold Dams and 2 Gold Sires in this pedigree. This is a true heifer bull to turn out with your heifers.

34 TSB LANGSTON 46L

Bull

Calved 2/12/2023 P759013 Tattoo TSB46L
Polled • Black • 3/4 SA 1/4 AN

Adj. BW	*MAC BLACKBEARD 31B		MAC F1 HUMBOLDT 312Z					
85#	MAC GALAXY 68G		MAC ZIP UP 69Z					
Wean Wt.	MAC F1 EVELYN 486E		BARSTOW BANKROLL B73					
593# ratio 97	TSB ECHO 62E		MAC ALLYCE 265A					
Dam's Production	TSB PENNY 58H		KEYS LONGSHOT 1Z					
NR 100 on 2 prog	NJF MISS FEIST 416B		TSB MISS RENO 7X					
			*THATS ZEPPLIN 134Z					
			NJF MISS STETSON 214Z					
	BW	WW	YW	MM	MWW	CED	CEM	
	EPD	-0.6	51	78	19	44	11.5	4.5
	MARB	CWT	REA	FAT	DOC	STAY		
	EPD	0.2	7.9	0.53	-0.07	8	15	

- TOP 15% for MARBLING
- If you are in the practice of keeping your heifers for replacements, the MAC GALAXY 68G genetics make great replacements. They are superior in balance and teat placement.
- Gold Dam in this pedigree.

Sons of PCSL Grand Slam (P734668)

35 TSB LAD 146L

Bull

Calved 3/6/2023 P758972 Tattoo TSB146L
Polled • Red • Purebred

Adj. BW	STP LMB DR JONES		STP INDIANA JONES					
79#	PCSL GRAND SLAM		DJF MISS 201Z					
Wean Wt.	*PCSL ZONE		*OPP SABER 847U					
630# ratio 103	KEYS CRUISER 105C		TSB CARLIE 11X					
Dam's Production	TSB MADILINE 134G		KEYS MONUMENT 234A					
NR 101 on 2 prog	TSB GOLD 100B		MISS KEY CLAIRE 169Y					
			ZBR NEBRASKA GOLD 080Y					
			TSB MARTHA 16X					
	BW	WW	YW	MM	MWW	CED	CEM	
	EPD	-0.3	48	70	20	44	13.1	6.3
	MARB	CWT	REA	FAT	DOC	STAY		
	EPD	0.0	0.3	0.53	-0.09	14	16	

- The paternal grand sire, STP LMB Dr. Jones, was the National Champion Bull in Denver.
- TSB Lad 146L is a Herd Bull with lots of built in performance. On the bottom side of the pedigree is a maternal great grandsire, ZBR Nebraska Gold 080Y, that creates the perfect curve bending EPD Profile.

36 TSB LOTHAR 56L

Bull

Calved 2/16/2023 P758976 Tattoo TSB56L
Polled • Black • Purebred

Adj. BW	STP LMB DR JONES		STP INDIANA JONES					
93#	PCSL GRAND SLAM		DJF MISS 201Z					
Wean Wt.	*PCSL ZONE		*OPP SABER 847U					
616# ratio 101	OPP VALOR 351A		TSB CARLIE 11X					
Dam's Production	TSB VANDA 175G		*MAC BLACK VISTA 349Y					
NR 96 on 3 prog	DCS BERRY 1B		OPP BLACK LADY 53S					
			BIG SKY CHINOOK 64U					
			*DCS CANDIE Y3					
	BW	WW	YW	MM	MWW	CED	CEM	
	EPD	1.2	48	72	19	43	11.9	5.4
	MARB	CWT	REA	FAT	DOC	STAY		
	EPD	0.0	-4.3	0.48	-0.09	10	15	

- A purebred Herd Bull prospect out of the grand sire of the National Champion Bull.
- 56L has a 616 lb. weaning weight with no creep.

Son of NJF Feists Subzero 15H (P742255)

37 TSB LINCOLN 30L

Bull

Calved 2/6/2023 P759059 Tattoo TSB30L
Polled • Black • 3/4 SA 1/4 AN

Adj. BW	ECR FLEMMER 824F OF 4D		EATHINGTON SUB-ZERO					
75#	NJF FEISTS SUBZERO 15H		MISS WWB DORIANNE 4D					
Wean Wt.	NJF MISS FEIST 886F		H A IMAGE MAKER 0415					
631# ratio 103	TSB STORMY 157E		NJF MISS FEIST 614D					
Dam's Production	TSB MARIE 68J		SKF BLK PLD SUIT 'N TIE					
NR 103 on 1 prog	TSB HEATHER 121A		TSB AUTUMN 134B					
			TSB UTAH 510W					
			TSB MALIBU 51U					
	BW	WW	YW	MM	MWW	CED	CEM	
	EPD	-3.0	60	85	20	50	15.4	7.3
	MARB	CWT	REA	FAT	DOC	STAY		
	EPD	0.0	17.5	0.52	-0.06	2	11	

- TOP 10% for BW
- TOP 20% for CED
- TSB LINCOLN 30L offers an outcross pedigree in this offering. He has a low BW of -3.0 and a high milk index of 20 on the EPD percentile chart.
- TSB 30L's maternal sire, TSB Stormy 157E, is in the TOP 5 % for Weaning Weight.

Sons of MAC Hanns 289H (P741008)

38

TSB HANDY MAN 22L

Calved 2/1/2023 P759048 Tattoo TSB22L
Polled • Black • 5/8 SA 3/8 AN

Adj. BW	MAC FIELD DAY 106F		MAC BLACKJACK 25B				
78#	MAC HANNs 289H		*MAC DENAE 12D				
Wean Wt.	MAC F1 ERICA 97E		CONNEALY COMRADE 1385				
579# ratio 95	ECR GAYLON 920G		MAC ALECIA 468A				
Dam's Production	TSB GALE 31J		CONNEALY COMRADE 1385				
NR 95 on 1 prog	TSB CARRIE 224G		ECR PLD LADY 40E OF 40Z				
			KEYS COSMO 186E				
			BODINES MS C520				
	BW	WW	YW	MM	MWW	CED	CEM
EPD	-2.6	60	95	21	51	17.2	9.0
	MARB	CWT	REA	FAT	DOC	STAY	
EPD	0.2	19.3	0.57	-0.04	12	14	

- 22L's sire is in the TOP 1% for CE, the TOP 2% for CEM, the TOP 10% for BW.
- We measure 13 traits in the EPD Percentiles. 22L has 11 markers in the TOP 30%
- Turn TSB HANDY MAN 22L into the replacement heifers pen.

40

TSB SARGE 1L

Calved 1/16/2023 P759053 Tattoo TSB1L
Polled • Black • 3/4 SA 1/4 AN

Adj. BW	MAC FIELD DAY 106F		MAC BLACKJACK 25B				
82#	MAC HANNs 289H		*MAC DENAE 12D				
Wean Wt.	MAC F1 ERICA 97E		CONNEALY COMRADE 1385				
616# ratio 101	JSR CHEMISTRY 9105		MAC ALECIA 468A				
Dam's Production	TSB JANEL 57J		ECR ELECTRON 712E OF 48T				
NR 101 on 1 prog	TSB TARA 33F		JSR MS ROCKY 3248A				
			WARD CHISUM C535				
			MAC BAILEE 134B				
	BW	WW	YW	MM	MWW	CED	CEM
EPD	-1.3	67	103	19	53	15.6	8.2
	MARB	CWT	REA	FAT	DOC	STAY	
EPD	0.1	23.2	0.62	-0.05	12	13	

- SARGE 1L combines low birth weights and high weaning weights with that extra performance. He is triple black and polled. Use with confidence on your heifers.

41

TSB LAWSON 14L

Calved 1/27/2023 P759036 Tattoo TSB14L
Polled • Black • 5/8 SA 3/8 AN

Adj. BW	MAC FIELD DAY 106F		MAC BLACKJACK 25B				
78#	MAC HANNs 289H		*MAC DENAE 12D				
Wean Wt.	MAC F1 ERICA 97E		CONNEALY COMRADE 1385				
604# ratio 99	MAC GALAXY 68G		MAC ALECIA 468A				
Dam's Production	TSB GALE 169J		*MAC BLACKBEARD 31B				
NR 99 on 1 prog	TSB GRETA 183G		MAC F1 EVELYN 486E				
			BIG SKY DOCUMENT 14D				
			*TSB GLORIA 26E				
	BW	WW	YW	MM	MWW	CED	CEM
EPD	-2.1	58	88	24	53	16.7	9.1
	MARB	CWT	REA	FAT	DOC	STAY	
EPD	0.2	16.4	0.60	-0.05	11	15	

- TOP 5% for MILK
- TOP 10% for CED
- TOP 20% for CEM
- TOP 20% for BW
- Triple black and polled. He is heifer Herd Bull prospect.



Lot 39 – TSB Layton 16L

39

TSB LAYTON 16L

Calved 1/28/2023 P759037 Tattoo TSB16L
Polled • Black • 3/4 SA 1/4 AN

Adj. BW	MAC FIELD DAY 106F		MAC BLACKJACK 25B				
83#	MAC HANNs 289H		*MAC DENAE 12D				
Wean Wt.	MAC F1 ERICA 97E		CONNEALY COMRADE 1385				
600# ratio 98	TSB STORMY 157E		MAC ALECIA 468A				
Dam's Production	TSB CHARM 171J		SKF BLK PLD SUIT 'N TIE				
NR 98 on 1 prog	MAC BETSY 139B		TSB AUTUMN 134B				
			*AVS OUT WEST 210X				
			MAC VALLIE 277X				
	BW	WW	YW	MM	MWW	CED	CEM
EPD	-1.4	66	95	20	53	16.1	8.8
	MARB	CWT	REA	FAT	DOC	STAY	
EPD	0.1	18.3	0.65	-0.05	14	13	

- Triple Black and Polled with 16.2 Calving Ease Direct. This is another heifer bull.

42

TSB LEON 2L

Calved 1/16/2023 P759061 Tattoo TSB2L
Polled • Black • 5/8 SA 3/8 AN

Adj. BW	MAC FIELD DAY 106F		MAC BLACKJACK 25B				
68#	MAC HANNs 289H		*MAC DENAE 12D				
Wean Wt.	MAC F1 ERICA 97E		CONNEALY COMRADE 1385				
549# ratio 90	MAC GALAXY 68G		MAC ALECIA 468A				
Dam's Production	TSB JENNA 7J		*MAC BLACKBEARD 31B				
NR 90 on 1 prog	TSB SUZANA 29G		MAC F1 EVELYN 486E				
			BIG SKY EDGE 26E				
			TSB MELINA 185E				
	BW	WW	YW	MM	MWW	CED	CEM
EPD	-4.2	52	80	23	48	18.5	9.8
	MARB	CWT	REA	FAT	DOC	STAY	
EPD	0.3	15.8	0.54	-0.04	11	15	

- TOP 2% for BW
- TOP 2% for CED
- TOP 3% for CEM
- TOP 15% for MILK
- Triple black and polled. A heifer bull with the calving ease numbers. He has generations of true low birth weights.

Best of the Best TSB Heifers



Lot 43 – TSB Laura 67L

43 TSB LAURA 67L

Heifer

Calved 2/20/2023 P758923 Tattoo TSB67L
Polled • Black • 3/4 SA 1/4 AN

Adj. BW	KEYS EXCEL 50E	KEYS MONUMENT 234A
81#	KEYS EXCEL 66G	MISS KEY PATIENCE 30Y
Wean Wt.	MISS KEY NOREEN 130C	RAO ALBERT
603#	SKF BLK PLD SUIT 'N TIE	*MISS KEY NOREEN 80Z
ratio 109	TSB DARLA 37D	SKF PAPA RAZZI
Dam's Production	TSB HOLLY 5A	SKF RED QUIPIE 7U
		ZBR NEBRASKA GOLD 080Y
		*TSB PUMKIN 75Y

	BW	WW	YW	MM	MWW	CED	CEM
EPD	0.0	60	91	19	49	12.7	6.2
	MARB	CWT	REA	FAT	DOC	STAY	
EPD	-0.1	16.7	0.87	-0.07	8	13	

- Unique pedigree
- This heifer needs to see the show ring.
- 67L has a huge REA EPD

What sets these heifers apart?

These heifers can fit into any program, whether it be seedstock or commercially based. We would absolutely love to keep all of these heifers in our own herd. They are the top 10 heifers out of the 92 contemporaries in the 2023 heifer crop. Several need to see the tan bark. Go to DV auctions and look at the individual videos of this top ten offering.



Keys Excel 66G – Sire of Lots 1-9, 43, 44 & 51

Best of the Best TSB Heifers



Lot 44 – TSB Lucie 127L

46

TSB LIDIA 137L

Calved 3/5/2023 P758962 Tattoo TSB137L
Polled • Black • 7/8 SA 1/8 AN

Heifer

Adj. BW
80#

Wean Wt.

609#
ratio 110

Dam's
Production

NR 105
on 4 prog

ECR ELECTRON 712E OF 48T
JSR CHEMISTRY 9105
JSR MS ROCKY 3248A

ECC 586C
***TSB TAYLOR 38F**
TSB TAMI 34D

TSB HUNTER 10C
*OPP BLACK LADY 48T
JCG ROCK 021X
JSR MS PAYDAY 7239
ECR ACHILLES 3008A
ECR LADY NELSON 100Y
ASHLYNN'S ACE
TSB TONYA 130A

	BW	WW	YW	MM	MWW	CED	CEM
EPD	0.7	61	92	17	47	8.6	3.7
	MARB	CWT	REA	FAT	DOC	STAY	
EPD	-0.1	9.1	0.60	-0.08	12	13	

- Full sibling bull sold to D & L Salers, Nebraska, in last year's sale.
- 2 replacements remain in TSB herd.

44

TSB LUCIE 127L

Calved 3/2/2023 P758963 Tattoo TSB127L
Polled • Black • 5/8 SA 3/8 AN

Heifer

Adj. BW
78#

Wean Wt.

643#
ratio 116

Dam's
Production

NR 110
on 4 prog

KEYS EXCEL 50E
KEYS EXCEL 66G
MISS KEY NOREEN 130C

STP CLYDE
***TSB ZIMA 51F**
TSB TAMMY 152D

KEYS MONUMENT 234A
MISS KEY PATIENCE 30Y
RAO ALBERT
*MISS KEY NOREEN 80Z
STP LMB SHORT STOP
MBF 821U
THATS ZACK 173
INI JAIME LES 68X

	BW	WW	YW	MM	MWW	CED	CEM
EPD	-0.3	65	99	18	50	13.1	6.7
	MARB	CWT	REA	FAT	DOC	STAY	
EPD	-0.1	18.3	0.84	-0.07	10	13	

- TOP 25% WW
- TOP 25% YW
- Double black
- Full sib remains in herd.
- Eye appeal with power.
- 2 Gold Dams in pedigree.

45

TSB LORI 161L

Calved 3/11/2023 P758956 Tattoo TSB161L
Polled • Black • 7/8 SA 1/8 AN

Heifer

Adj. BW
82#

Wean Wt.

616#
ratio 111

Dam's
Production

NR 101
on 4 prog

ECR ELECTRON 712E OF 48T
JSR CHEMISTRY 9105
JSR MS ROCKY 3248A

KKCC REVELATION 401B
TSB BLOSSOM 162F
TSB JONNA 171A

TSB HUNTER 10C
*OPP BLACK LADY 48T
JCG ROCK 021X
JSR MS PAYDAY 7239
KKCC RESOLUTION 901W
KKCC BP PREDESTINED 705T
SRS WILDCAT 0560W
*MISS KEY DESIGN 121P

	BW	WW	YW	MM	MWW	CED	CEM
EPD	0.8	65	101	14	46	9.7	4.9
	MARB	CWT	REA	FAT	DOC	STAY	
EPD	0.0	22.6	0.67	-0.07	12	14	

- TOP 25% WW
- TOP 20% YW
- Parke Ranch, Drummond, Montana, purchased a full brother to TSB Lori 161L for \$10,000 in last year's sale.
- 2 Gold Dams in pedigree

47

TSB LILY 38L

Calved 2/11/2023 P758891 Tattoo TSB38L
Polled • Black • 3/4 SA 1/4 AN

Heifer

Adj. BW
87#

Wean Wt.

617#
ratio 111

Dam's
Production

NR 100
on 9 prog

WVB FRANKLIN 4F
NJF JAGGER 5J
NJF MISS FEIST 502C

MAC YARDSTICK 160Y
MAC F1 AMELIA 346A
MAC XANTHE 1X

RF DIESEL 615C
TSB STACY 4Z
KEYS ROCKSTAR 95X
NJF MISS FEIST 959W
CONNELLY IMPRESSION
OCC 8098 DAISY TH
BIG SKY TRITON 40R
WJM URSULA 22U

	BW	WW	YW	MM	MWW	CED	CEM
EPD	1.6	68	93	16	50	8.6	3.7
	MARB	CWT	REA	FAT	DOC	STAY	
EPD	-0.2	20.6	0.75	-0.09	12	15	

- TOP 15% FOR WW
- TOP 30% FOR YW
- Lily stamps the TSB beef business program. She is deep made with eye appeal.

Best of the Best TSB Heifers



Lot 48 – TSB Lia 101L



Bowen Beeson

48 TSB LIA 101L

Heifer

Calved 2/25/2023 P758907 Tattoo TSB101L
Polled • Black • 5/8 SA 3/8 AN

Adj. BW
87#
Wean Wt.
606#
ratio 109
Dam's Production
NR 108
on 7 prog

BIG SKY REVELATION 40B *SRS OUTBACK 0809X
ECR EASTWOOD 713E BIG SKY MISS ROWDY 68T
 *OPP BLACK LADY 1X OF 77U OPP UNIVERSAL 809U
 S BLACK LADY 77U
 MAC YELLOWVILLE 21Y MAC F1 SUNDANCE 4S
***TSB ALICIA 116C** MAC F1 MARILEE 4M
 *TSB RUBY 69Z PRK TRANSFORMER 248T
 *MISS KEY RAYNA 182R

	BW	WW	YW	MM	MWW	CED	CEM
EPD	1.4	61	93	20	50	11.8	6.7
	MARB	CWT	REA	FAT	DOC	STAY	
EPD	0.2	17.1	0.49	-0.04	11	18	

- TOP 10% For STAYABILITY
- 1 Gold Sire
- 3 Gold Dams including 101L's dam.
- Dam has produced a Herd Bull for Elm Creek Salers, North Dakota, in last year's sale for \$7500.



ECR Eastwood 713E – Sire of Lots 23-29 & 48

49 TSB LABERTA 142L

Heifer

Calved 3/5/2023 P758968 Tattoo TSB142L
Polled • Black • 7/8 SA 1/8 AN

Adj. BW
86#
Wean Wt.
636#
ratio 115
Dam's Production
NR 104
on 4 prog

ECR ELECTRON 712E OF 48T TSB HUNTER 10C
JSR CHEMISTRY 9105 *OPP BLACK LADY 48T
 JSR MS ROCKY 3248A JCG ROCK 021X
 JSR MS PAYDAY 7239
 ECR 638D OF 130Z ECR 412B OF 361S
BODINE'S MS 836F *OPP BK LADY 130Z OF 49X
 ZBR ROBIN 336A TSB TUXEDO 417U
 RRF ROBINETTA 10P

	BW	WW	YW	MM	MWW	CED	CEM
EPD	1.9	71	107	17	52	8.8	5.1
	MARB	CWT	REA	FAT	DOC	STAY	
EPD	-0.1	17.8	0.71	-0.08	11	14	

- TOP 10% WW
- TOP 10% YW
- 2 Gold Dams in pedigree
- Full sib sold to Josh Hoffman, North Dakota, in last year's sale.

50 TSB LIRA 111L

Heifer

Calved 2/28/2023 P758966 Tattoo TSB111L
Polled • Black • Purebred

Adj. BW
83#
Wean Wt.
591#
ratio 107
Dam's Production
NR 94
on 4 prog

ECR ELECTRON 712E OF 48T TSB HUNTER 10C
JSR CHEMISTRY 9105 *OPP BLACK LADY 48T
 JSR MS ROCKY 3248A JCG ROCK 021X
 JSR MS PAYDAY 7239
 KKCC REVELATION 401B KKCC RESOLUTION 901W
TSB NIKE 79F KKCC BP PREDESTINED 705T
 TSB HEATHER 121A TSB UTAH 510W
 TSB MALIBU 51U

	BW	WW	YW	MM	MWW	CED	CEM
EPD	0.5	64	96	11	43	9.6	3.7
	MARB	CWT	REA	FAT	DOC	STAY	
EPD	-0.1	13.8	0.71	-0.09	12	13	

- TOP 25% WW
- TOP 25% YW
- 1 Gold dam in pedigree
- A fancy heifer prospect.

Best of the Best TSB Heifers



Lot 51 – TSB Lydia 144L

52

TSB CANDY 197L

Calved 3/26/2023 P759070 Tattoo TSB190L
Polled • Black • 3/4 SA 1/4 AN

Heifer

Adj. BW

81#

Wean Wt.

574#

ratio 104

Dam's

Production

NR 103

on 2 prog

*MAC BLACKBEARD 31B
MAC GALAXY 68G
MAC F1 EVELYN 486E

KEYS CRUISER 105C
TSB CANDY 197H
*TSB CARLA 80C

MAC F1 HUMBOLDT 312Z
MAC ZIP UP 69Z
BARSTOW BANKROLL B73
MAC ALLYCE 265A
KEYS MONUMENT 234A
MISS KEY CLAIRE 169Y
ZBR NEBRASKA GOLD 080Y
TSB CHRISTINA 90Y

	BW	WW	YW	MM	MWW	CED	CEM
EPD	-0.3	55	84	21	48	11.8	6.4
	MARB	CWT	REA	FAT	DOC	STAY	
EPD	0.3	10.6	0.53	-0.06	8	18	

- TOP 10% for MARBLING
- TOP 10% for STAYABILITY
- TOP 30% for MILK
- Maternal grand dam TSB Carla is a Gold Dam
- Her dam produced a Herd Bull for Bill Rosenau, Minnesota, in the 2023 sale.

51

TSB LYDIA 144L

Calved 3/6/2023 P758912 Tattoo TSB144L
Polled • Red • 5/8 SA 3/8 AN

Heifer

Adj. BW

83#

Wean Wt.

574#

ratio 104

Dam's

Production

NR 101

on 7 prog

KEYS EXCEL 50E
KEYS EXCEL 66G
MISS KEY NOREEN 130C

KEYS LONGSHOT 1Z
TSB GILDA 39C
TSB ROSE 34A

KEYS MONUMENT 234A
MISS KEY PATIENCE 30Y
RAO ALBERT
*MISS KEY NOREEN 80Z
KEYS LONGSHOT 1X
MISS KEY PATIENCE 2X
ZBR NEBRASKA GOLD 080Y
TSB LEA 42Y

	BW	WW	YW	MM	MWW	CED	CEM
EPD	0.8	65	101	12	44	11.5	4.8
	MARB	CWT	REA	FAT	DOC	STAY	
EPD	0.0	15.3	0.87	-0.07	9	14	

- TOP 25% for WW
- TOP 20% for YW
- 2 Gold Dams in pedigree
- Full brother sold to Rowell Cattle Co, Oklahoma.

DVAuction
Broadcasting Real-Time Auctions

Go to www.dvauction.com to view the individual videos of the herd bull and heifer prospects

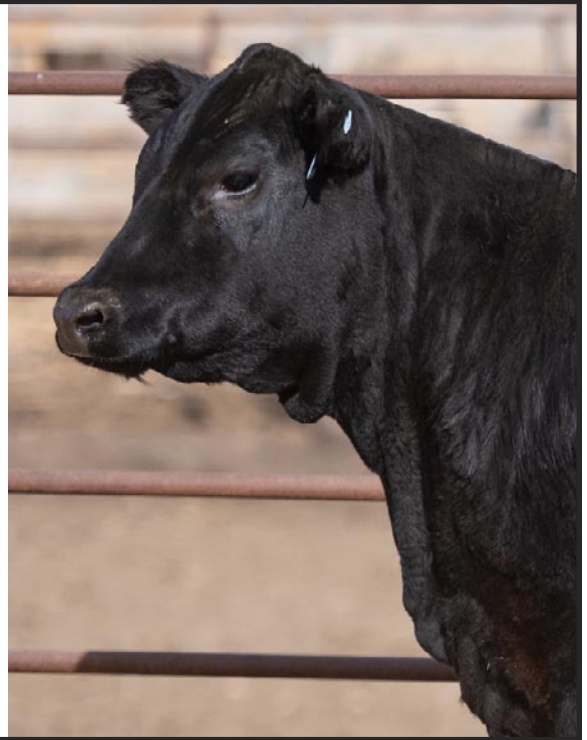
Thank You to our Customers!

“We get our biggest boost in performance due to heterosis in lowly heritable traits like cow longevity and fertility. And given today’s cost in developing replacement heifers, cow longevity is more important now than ever before.

“Indeed, cow longevity and fertility are two of the most important economic traits in a commercial cow herd. Without question. That’s because you can’t sell a calf that’s never born. And the longer a cow stays in the herd, the more her calves economic value to the rancher.”

Bob Weaber
Kansas State University Professor
and Extension Cow Calf Specialist

A Salers cow is a hard working cow with staying power and longevity. That’s what Salers breeders have always known.



Definition of EPDs

Birth EPD (pounds) is based on the measured birth weight of progeny, adjusted for dam age. The lower the value the lighter the calf at birth and the lower the likelihood of a difficult birth. This is particularly important when selecting sires for use over heifers.

Weaning EPD (pounds) is calculated from the weight of progeny taken between 80 and 300 days of age. Values are adjusted to 205 days and for age of dam. This EPD is the best single estimate of an animal's genetic merit for growth to early ages.

Yearling EPD (pounds) is calculated from the weight of progeny taken between 301 and 450 days of age, adjusted to 365 days and for age of dam. This EPD is the best single estimate of a sire's genetic merit for yearling weight.

Milk EPD (pounds) is an estimate of an animal's milking ability. For sires, this EPD indicates the effect of the daughter's milking ability, inherited from the sire, on the weaning and yearling weights of her calves. For dams, it indicates her own milking ability.

Maternal Weaning Weight EPD (pounds) is a combination of Milk and Weaning EPDs and estimates the genetic merit of the animal to produce a calf at weaning.

Calving Ease Direct predicts the ease with which the progeny of the individual should be born. A positive number indicates easier calving.

Calving Ease Maternal indicates the ability of a sire’s daughters to have a calf at two years of age. Higher or positive numbers indicate easier calving for the daughter of the individual.

Marbling Score EPD is calculated from numeric scores assigned to each carcass quality grade division. Data is adjusted to a standard carcass weight of 750 lb. Positive EPD values indicate greater numeric marbling scores at the same carcass weight.

Carcass Weight EPD (pounds) is calculated from carcass weight data from the progeny of sires, adjusted to 450 days of age. Positive values indicate heavier carcass weights at the standard age of 450 days.

Rib Eye Area EPD (square inches) is calculated from live animal ultrasound measurements and carcass measurements of rib eye area taken between the 12th and 13th rib, and adjusted to a 750 lb. carcass weight. Rib eye area is closely associated with percent retail product when carcass weight is held constant. Sires with more positive Rib Eye Area EPDs are expected to produce better muscled and higher percentage yielding progeny at the same carcass weight than will sires with lower Rib Eye Area EPDs.

Fat EPD (inches) is calculated from live animal ultrasound measurements and from carcass measurements of subcutaneous fat depth at the 12/13th rib site. Data is adjusted to a standard 750 lb. carcass weight. Sires with lower EPDs are expected to produce leaner progeny at any particular carcass weight than are sires with higher EPDs.

Docility EPD is calculated from measurements of temperament score. Positive EPD values indicate a tendency towards more acceptable temperament.

Stayability EPD is calculated from calving and pedigree information. It predicts genetic differences in the likelihood that daughters will remain in production until six years of age or beyond. EPDs are expressed as deviations from a 50% probability.

Salers Breed Avg. EPDs for Non-Parents

	BW	WW	YW	MM	MWW	CED	CEM
EPD	-0.4	58	85	19	48	12.6	6.3
	MARB	CWT	REA	FAT	DOC	STAY	
EPD	0.1	11.1	0.61	-0.06	11	15	

TB Salers

Friday, March 29, 2024
1 p.m. • Yankton, South Dakota



TB Salers

The Beesons
30747 403rd Ave.
Dante, SD 57329



First Class Mail

FIRST CLASS
U.S. POSTAGE
PAID
KANSAS CITY, MO
PERMIT NO. 2344

